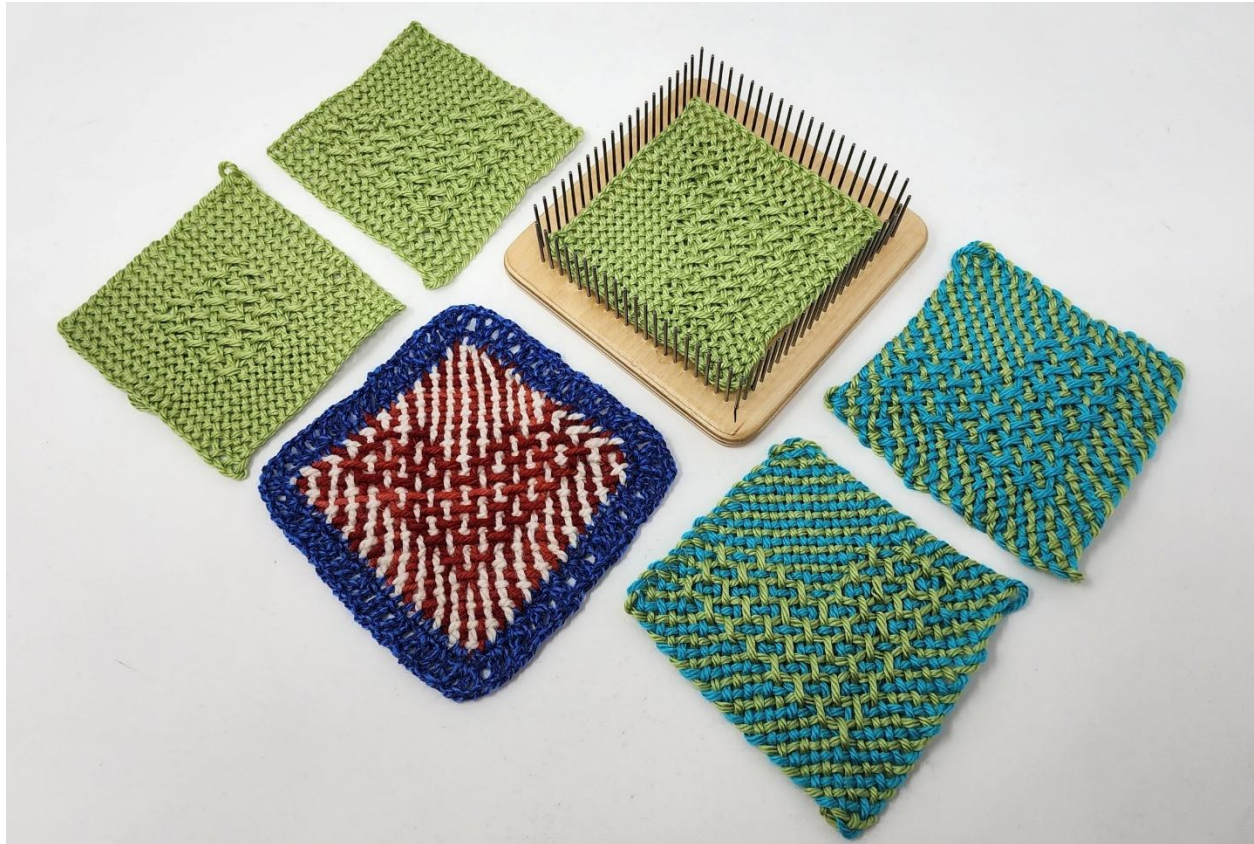


Pick-Up Pattern for 2-Color Weaving a Heart on the TURTLE Square 4" R Loom

By Gabi van Tassell, V 1.0 June 16, 2026



This document is a supplement to the [blog post “Pick-Up Patterns for Continuous-Strand Weaving on Square Looms”](#) on our TURTLE Loom blog with instructions for the [TURTLE Square 4” R-regular sett loom](#). Read the post for more information about this weaving method and how you can apply the knowledge to other square looms.

If you have any questions, please contact me and I will do my best to help you.
gabi@texasgabi.com

Stay informed and get the latest TURTLE loom news at www.turtleloom.com

To buy TURTLE looms visit www.bluebonnetcrafters.com

The information provided in this document is for personal use only.

Written Instructions for Weaving a Heart on the TURTLE Square 4” R Loom

Legend:

Color A is the color that you will use to work the pick-up pattern. It will show the heart on the fabric side that is facing you.

Color B is the supporting color that you will use for plain weave. It will be the complementing color for the side of the weaving that is facing towards you.

Plain means plain weave. Weave U1, O1 as needed.

Row	Color	Weaving	Comment
Prep	B		Tie to bottom pin (closest to you) and guide up between top corner pin and adjacent pin.
Prep	A		Tie to top corner pin. Guide yarn around the next pin, “trapping” the first strand of the other color. You are now ready to weave.
1	A	U1	Finish round by guiding the yarn between the last pin that has yarn on it and the next available pin. Switch colors by guiding the next color OVER the strand that you just used and around two pins. You are now ready to weave the next row.
2	B	U1, O1, U1	From now on, weave each round as instructed, then switch colors as described above after each round.
3	A	Plain	
4	B	Plain	
5	A	Plain	
6	B	Plain	
7	A	Plain	

Row	Color	Weaving	Comment
8	B	Plain	
9	A	[U1, O1] 3 times, U1, O3, [U1, O1] 3 times, U1	This is where you start weaving the first pick-up. Check: The working yarn goes around the 10 th pin from the top corner. There are currently 17 warps.
10	B	Plain	
11	A	[U1, O1] 3 times, [U1, O3] 2 times, [U1, O1] 3 times, U1	
12	B	Plain	
13	A	[U1, O1] 3 times, [U1, O3] 3 times, [U1, O1] 3 times, U1	
14	B	Plain	
15	A	[U1, O1] 3 times, [U1, O3] 3 times, [U1, O1] 5 times, U1	
16	B	Plain	
17	A	[U1, O1] 3 times, [U1, O3] 4 times, [U1, O1] 5 times, U1	
18	B	Plain	
19	A	[U1, O1] 3 times, [U1, O3] 4 times, [U1, O1] 7 times, U1	
20	B	Plain	
21	A	[U1, O1] 9 times, [U1, O3] 4 times, [U1, O1] 3 times, U1	Start working the last row at the loom corner where the yarn resides. This is the opposite weaving direction as used so far. Turn your loom for easy weaving. Weave with a needle in a single row.

Chart for Weaving a 2-Colored Heart on the TURTLE Square 4" R Loom (Lefthanded)

Legend:

- Light green: Pattern, U
- Medium green: Pattern, O
- Dark green: Pattern color, emphasizing pick-up
- Light gray: Plain, U
- Medium gray: Plain, O

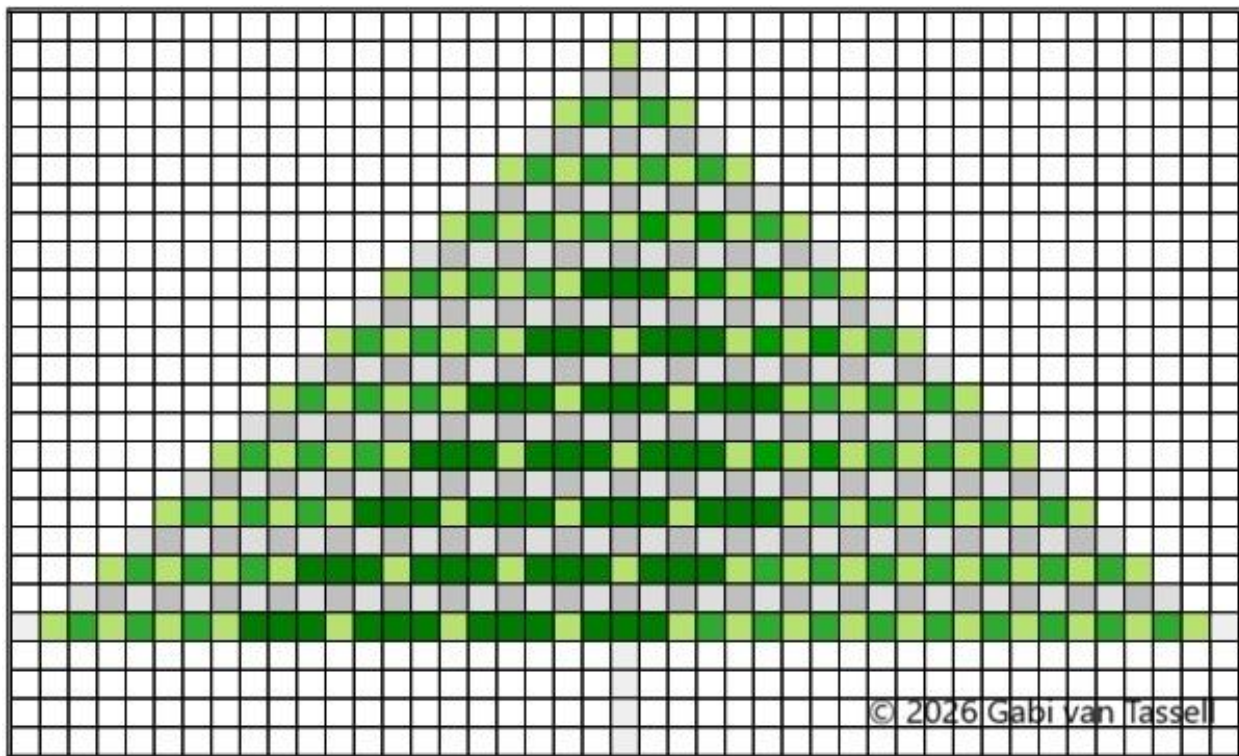


Chart for Designing Your Own 2-Colored Pick-Up Pattern on the TURTLE Square 4" R Loom

Use a marker to color in your own pick-ups (going over 3 threads). Look at the heart patterns above to see how it is done there.

